

Automatic Valves

Touch valves TV



Simply move more.

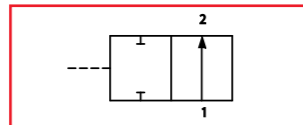
Description

Robust touch valve in galvanized steel design. The suction pad engages only when it is placed on the workpiece. Otherwise it stays closed. The valves are available in 2 assembly designs.

- on suction plate retainers with central vacuum feed (disc ZS-TV-M16 necessary when an articulated suction plate retainer SAK-M16-M16x1,5 is used)
- on suction pads with base bodies and separate vacuum feed (necessary adapter ASV-M12 or M16)

Application

- different grade of occupancy of the suction pads (workpieces with changing dimensions)
- any mounting position



Switching diagram TV



TV-M12 ... TV-M16

Article number

| Type | | Intermediate disc ZS-TV- ... | | Adapter ASV- ... | |
|--------|-------------|---------------------------------|-------------|---------------------|-------------|
| TV-M12 | 1.51.5.0002 | --- | --- | ASV-M12-1/4 | 1.31.3.0022 |
| TV-M16 | 1.51.5.0009 | ZS-TV-M16 | 2.31.1.0059 | ASV-M16-3/8 | 1.31.3.0023 |

Technical data

| Type | Pressure range (bar) | Flow rate | | max.own stroke (HW) suction pad (mm) | Temperature (°C) | Weight (kg) |
|--------|-------------------------|-----------|-------|---|---------------------|----------------|
| | | (m³/h) | (l/s) | | | |
| TV-M12 | -1 ... 0 | 2,9 | 0,8 | 8 | 0 ... +60 | 0,017 |
| TV-M16 | -1 ... 0 | 5,5 | 1,5 | 9 | 0 ... +60 | 0,035 |

NB

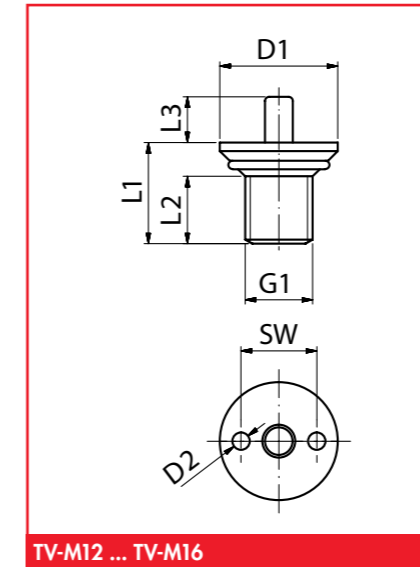
- When pads with touch valves are being used they must always fully sit on the workpiece as they will cause leakage when placed half on/half off.
- The own stroke of the pad (HW) must be smaller than the stroke of the touch valve, otherwise no full ventilation is possible.

Automatic Valves

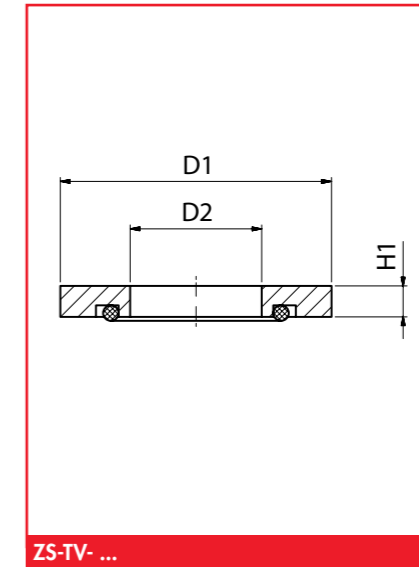
Touch valves TV



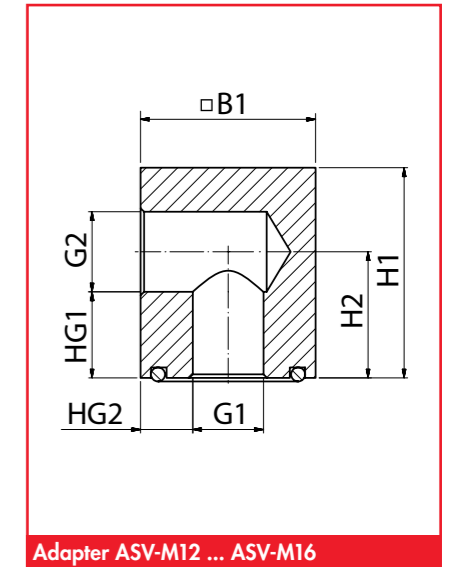
Simply move more.



TV-M12 ... TV-M16



ZS-TV- ...



Adapter ASV-M12 ... ASV-M16

Dimensions

| Type | L1 | L2 | L3 | B1 | H1 | H2 | D1 | D2 | G1 | G2 | HG1 | HG2 | SW |
|-------------|-----|-----|------|-----|-----|-----|-----|-----|-----|------|-----|-----|-----|
| TV-M12 | 18 | 10 | 10 | --- | --- | --- | 26 | 4,1 | M12 | --- | --- | --- | 15 |
| TV-M16 | 24 | 16 | 10,9 | --- | --- | --- | 30 | 4,1 | M16 | --- | --- | --- | 18 |
| ZS-TV-M16 | --- | --- | --- | --- | 4 | --- | 35 | 17 | --- | --- | --- | --- | --- |
| ASV-M12-1/4 | --- | --- | --- | 25 | 30 | 18 | --- | --- | M12 | G1/4 | 11 | 5 | --- |
| ASV-M16-3/8 | --- | --- | --- | 25 | 30 | 18 | --- | --- | M16 | G3/8 | 11 | 5 | --- |